



Interactive engagement in meeting rooms and classrooms

Sharp Collaboration Displays



Make meetings come alive

Meetings work best when everyone is engaged, involved and able to contribute, but we know that this can be a challenge. Thanks to the simple, intuitive operation of our interactive displays, we are breaking down barriers to inclusion to make meetings come alive.

With its intuitive, reliable, and proven design, the Sharp Collaboration Display portfolio brings confidence and trust to any presenter or meeting enabler, encouraging the best group collaboration, idea sharing and decision making.

Sharp Collaboration Displays can be used in multiple corporate and educational environments, as well as in specialised professional applications that require seamless operation and visibly better collaboration.

Content

Overview	2
LA Series - 65"/75"/86"	4
LB Series - 65"/75"/86"	6
LC Series - 65"/75"/86"	8
Sharp Collaboration Displays at a glance	10
Specifications	11
Software Solutions	12
Options - Computing, Mounting, Stands, Audio	14



Sharp Collaboration Displays

It's as easy as ABC

A	Sharp LA Series
is for Advanced	High-end Enterprise Non-Android

B	Sharp LB Series
is for Business	Midrange SMB Android SoC - option to hide

C	Sharp LC Series
is for Classroom	Entry Higher Education Android SoC

Benefits of the Sharp Collaboration Display portfolio

- Intuitive “Pen-on-Paper” user experience along with air-bonded glass, gives a particularly smooth, engaging and natural writing performance.
- **Unhindered readability** during classroom or meeting room presentations without distracting reflections or glare from windows or other light sources.
- **Rich connectivity** featuring multiple industry standard signal inputs for flexible integration into AV infrastructures including the latest USB-C input.
- A **modular & futureproof** approach to enhance the computing power of your display, choose from different slot-in PC options (Intel® OPS, Intel® SDM).
- **Secure remote management** controls your Sharp Collaboration Displays remotely using NEC NaviSet Administrator 2; proactively manage maintenance requirements saving time and resources.



Simply safer meetings

When you need to safeguard security whilst promoting productivity in hybrid meetings.

Sharp LA Series

Bringing advanced professional functionality to Enterprise users, the LA Series safeguards the highest IT security standards whilst supporting maximum choice and flexibility. An Intel®SDM slot expands the display's customisable capability allowing safe and seamless integration into corporate IT systems, or benefit from pre-installed functionality including Sharp Meeting Launcher for quick access to your favourite apps and VC platforms, FlatFrog Board collaborative whiteboarding software, and AirServer™ for wireless screen sharing.

The LA series supports orientation any which way, including face up, allowing table-top, tilted desk, or multi-board side-by-side installations for up to three displays. Users can connect their own notebook, safely and securely via a USB-C connection, providing best versatility in hybrid meetings and spontaneous collaborative interactions.

The LA Series integrates elegantly and seamlessly into high-end meeting rooms and boardrooms providing trusted long-life performance whilst making minimal energy demands.

A
is for Advanced

Sharp LA Series
High-end
Enterprise
Non-Android

B
is for Business

Sharp LB Series
Midrange
SMB
Android SoC - option to hide

C
is for Classroom

Sharp LC Series
Entry
Higher Education
Android SoC

Benefit from the most natural writing experience with the latest InGlass™ M5 touch technology paired with a high haze panel and premium glass coating.

- Most natural writing experience – InGlass™ M5 premium touch system supports patented pressure sensitivity using passive pens as well as Windows Ink and palm rejection.
- Best readability – 500cd/m² brightness output with high haze filter and premium glass coating ensures content is easily readable even in brightly lit spaces.
- ‘Secure by design’ – the non-Android platform with enhanced security features meets the highest IT security standards
- Optional Windows based Intel®SDM slot-in PC – driving unlimited versatility with powerful integrated computing. Includes Sharp’s Meeting Launcher for quick and easy access to your apps offering a secure and locked environment.
- Energy efficiency – built-in functionality including an ambient light sensor, human presence detection and eco modes help to reduce power consumption.

Zero-Bonding
for more accurate touch response

InGlass™ M5
for exceptional writing experiences

Most natural writing
supporting Windows Ink, palm rejection & pressure sensitivity

Premium coating
resists fingerprints, scratches & glare in perfect balance

Sharp Meeting Launcher*
provides quick & easy access to Windows apps

Best-in-class image quality
superior brightness output and high haze panel

AirServer*
supporting native wireless screen sharing without apps or dongles

Intel® SDM slot
for enhanced computing power

65" / 75" / 86"

FlatFrog Board for Rooms**
highly collaborative cloud-based whiteboarding platform

Built-in ECO sensors
motion and brightness sensors help reduce power consumption

Secure by design
meeting highest IT security standards

USB-C
BYOM with up to 65W charging

* Optional with SDM-L Slot-in PC Collaboration
** One-year free license included





Enjoy a more natural way of working

When you need full attention on successful meeting outcomes, you need frictionless interactivity.

Sharp LB Series

The LB range of smart interactive displays combines intuitive 'Pen-on-Paper' user experiences with Zero Bonding and Sharp's PrecisionTouch technology. The single USB-C connector makes it so simple to walk into a room, plug in your device and start working together straight away. The LB series also features an integrated Android SoC with whiteboard, overlay writing mode and wireless screen sharing functionality as well as graded security to help enhance your productivity.

The LB series is the perfect choice for busy office environments, meeting rooms and training sessions that require quick responsive operation and smart integrated collaboration tools. It encourages effective group teamwork, promotes idea sharing and helps people deliver great presentations and achieve better meeting outcomes.

A Sharp LA Series
High-end Enterprise
Non-Android
is for Advanced

B Sharp LB Series
Midrange SMB
Android SoC - option to hide
is for Business

C Sharp LC Series
Entry Higher Education
Android SoC
is for Classroom

Benefit from Sharp's PrecisionTouch technology enabling highly accurate and responsive writing experiences with Windows Ink support.

- Highly responsive touch experiences - Sharp PrecisionTouch technology with Windows Ink support provides accurate and natural touch interaction.
- Out-of-the-box collaboration - the integrated Android SoC features a powerful home screen launcher offering fast and flexible access to a range of pre-installed apps.
- Latest BYOD wireless collaboration - wirelessly share content from any device using the BytelloShare app.
- No need to bring your own notebook - the trusted Google certified platform allows you to install your own applications to the built-in Android SoC.
- 'Secure by design' - graded data security allows to you to adjust the Android SoC security level, with the option to hide.



* Also supporting native AirPlay, Chromecast and Miracast.





Boost engagement in learning environments

When you need to engage your audience, you need to make your delivery interactive.

Sharp LC Series

Designed to meet the Bring Your Own Device (BYOD) preferences of today's tech-savvy students, the Sharp LC series is equipped with seamless USB-C connectivity. Just a single cable connects display to personal device whilst receiving charge in return.

An all-in-one solution, the LC series features pre-installed functionality for instant interactivity, and with the eShare feature, content can be wirelessly shared between devices for best collaboration amongst peers and mentors.

Size up your screen area by connecting another display or projector via HDMI-OUT to be seen by a bigger audience.

For higher education in classrooms and small work groups, the LC series offers low cost, easy to use functionality to boost engagement in learning environments.

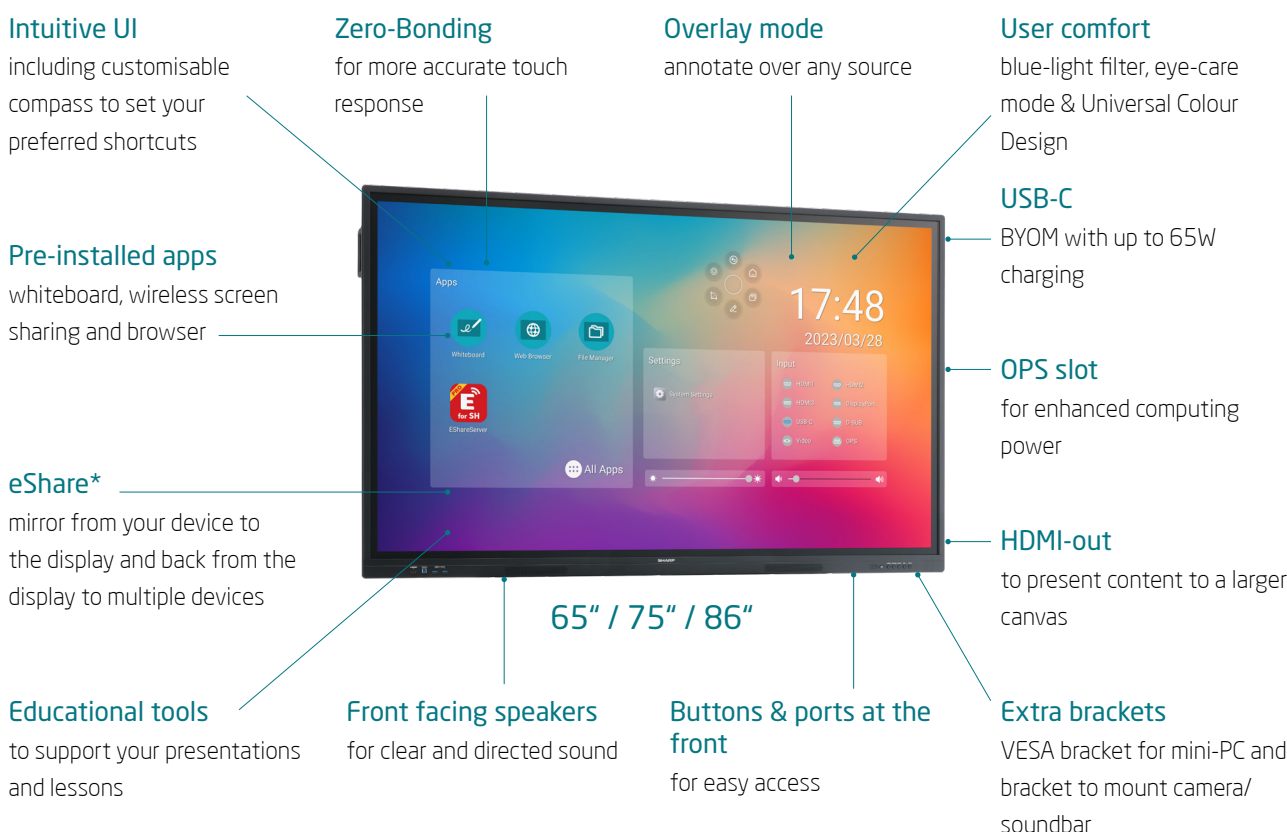
<h1>A</h1>	Sharp LA Series High-end Enterprise Non-Android
is for Advanced	

<h1>B</h1>	Sharp LB Series Midrange SMB Android SoC - option to hide
is for Business	

<h1>C</h1>	Sharp LC Series Entry Higher Education Android SoC
is for Classroom	

Benefit from pre-installed educational tools for an all-in-one teaching and learning experience.

- Out-of-the-box ready experience – with interactive functionality pre-installed, no external devices are needed for an all-in-one solution.
- Boost participation with wireless sharing - share content between devices and to the display simultaneously with the eShare feature.
- Instantly access the tools you need – powerful educational tools are always available no matter which input is used.
- Ease of use - buttons and ports are located at the front of the display for fast and easy access.
- Project to a bigger audience - connect to an additional output device such as a projector via HDMI-OUT, ideal for lecture halls.



* Also supporting native AirPlay, Chromecast and Miracast.



Sharp Collaboration Displays at a glance

Whether you are hosting a meeting, delivering a presentation or teaching a class, Sharp's Collaboration Displays offer effortless interaction, communication and sharing. Find out which product series is right for you.

Product Series	LA Series	LB Series	LC Series
----------------	-----------	-----------	-----------



Touch Technology	InGlass™ M5	PrecisionTouch	Infrared
Windows Ink	✓	✓	X
Palm Rejection	✓	X	X
Pressure Sensitivity	✓	X	X
Operating Hours	24/7	16/7	16/7
Slot-in Option	Intel SDM	Intel OPS	Intel OPS
Embedded Android SoC	X	✓	✓
Hide Android SoC	N/A	✓	X
App Side Loading (Android SoC)	N/A	✓	X
Launcher Application	+	✓	✓
Embedded Whiteboard	+	✓	✓
Embedded Wireless Screen Sharing	+	✓	✓
Pre-installed Educational Tools	X	X	✓
Video Output	✓	X	✓
Face-up Support	✓	X	X
Multi-Board Support	✓	X	X

✓	Standard
X	Not available
+	Optional

Specifications

Product	Product Series	LA Series	LB Series	LC Series
	Sizes [inch]	65 / 75 / 86	65 / 75 / 86	65 / 75 / 86
Display	Panel Technology	IPS / Direct LED	VA / Direct LED (86: IPS / Direct LED)	IPS / Direct LED
	Brightness w/o glass [cd/m ²]	500 (65: 450)	400	450
	Supported Orientation	Landscape, Portrait, Face-up	Landscape, Portrait (except 86)	Landscape
	Operating Hours	24/7	16/7	16/7
Glass	Haze Level [%]	4 ~ 8	3 ~ 8	3 ~ 8
	Hardness [H]	≥8	≥8	≥8
	Bonding Technology	Zero Bonding	Zero Bonding	Zero Bonding
Touch	Touch Technology	InGlass™ M5	PrecisionTouch	Infrared
	Touch Points	20	20	20
	Input Method	Finger, Stylus, Gloves	Finger, Stylus, Gloves	Finger, Stylus, Gloves
	Packaged Pen	2x Passive Pen (2mm/5mm)	2x Passive Pen (3mm/9mm)	2x Passive Pen (3mm/8mm)
	Windows Ink	YES	YES	NO
	Palm Rejection	YES	NO	NO
	Pressure Sensitivity	YES	NO	NO
Connectivity	Inputs	2x HDMI, 1x DP, 1x USB-C, 3x USB-A, 1x USB-B (Touch)	1x VGA, 3x HDMI, 1x USB-C, 5x USB-A, 2x USB-B (Touch)	1x VGA, 3x HDMI, 1x DP, 1x USB-C, 4x USB-A, 2x USB-B (Touch)
	Outputs	1x DP	NO	1x HDMI
	Front Bezel Ports	NO	2x USB-A	1x HDMI, 1x USB-B, 2x USB-A
Computing	Slot-in Option	Intel SDM	Intel OPS	Intel OPS
	Embedded SoC	NO	Android 9	Android 11
	Hide Android SoC	N/A	YES	NO
	App Side Loading (Android SoC)	N/A	YES	NO
SW & Apps	Pre-installed Apps (Android SoC)	N/A	YES	YES
	Pre-installed Educational Tools	N/A	NO	YES
	Packaged Software	FlatFrog Board for Rooms (1 year), Sharp Pen Software	Sharp Pen Software	Sharp Pen Software
Electrical	Power Consumption Eco (shipping) [W]	65: 190 75: 205 86: 275	65: 165 75: 230 86: 295	65: 180 75: 200 86: 260
Mechanical	Dimensions (W x H x D) [mm]	65: 1,493.5 x 896.1 x 90.7 75: 1,720.1 x 1,025.9 x 86.5 86: 1,965.4 x 1,163.9 x 86.5	65: 1488.4 x 896.6 x 85.5 75: 1709.4 x 1019.8 x 85.7 86: 1957 x 1159.5 x 85.7	65: 1511.6 x 917.9 x 85.9 75: 1722.5 x 1032.1 x 87.1 86: 1967.9 x 1170.2 x 87.1
	Weight [kg]	65: 49 75: 56.5 86: 71.5	65: 36.5 75: 49.5 86: 62.5	65: 38.5 75: 51.0 86: 65.0
	VESA Mounting [mm]	65/75/86: 600 x 400	65: 600 x 400 75: 800 x 400 86: 800 x 600	65: 600 x 400 75: 800 x 400 86: 800 x 600
	Bezel Width [mm]	4.8 (L/R/T); 32.3 (B)	16.8 (L/R/T); 45.7 (B)	21.9 (L/R/T); 53.2 (B)
	Front Bezel Buttons	Stand-by, User OSD	Stand-by	Stand-by, Home, Freeze, Input, Volume
	Audio	Integrated Speakers	2x 10 W	2x 10 W
Sensors	Integrated Sensors	Temperature, Ambient Light, Presence Detection	Temperature	Temperature
Control	NaviSet	Full Support	Basic Support	Basic Support
	Crestron certified	Crestron v2	Crestron v2	NO
Certifications	ClickShare	YES	YES	YES
	Google CTS	N/A	YES	NO

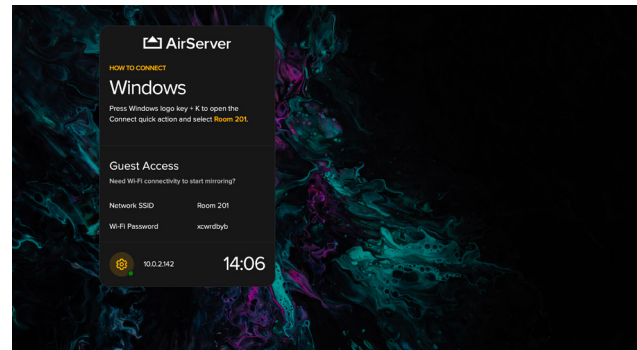
Collaborate Smarter

We offer a variety of software solutions to help get the most out of your meetings and presentations. They are easy to install and use, and do not require any technical expertise.

AirServer

Start presenting on time with native wireless screen mirroring. AirServer supports AirPlay, Google Cast, Miracast and guest access along with many innovative features.

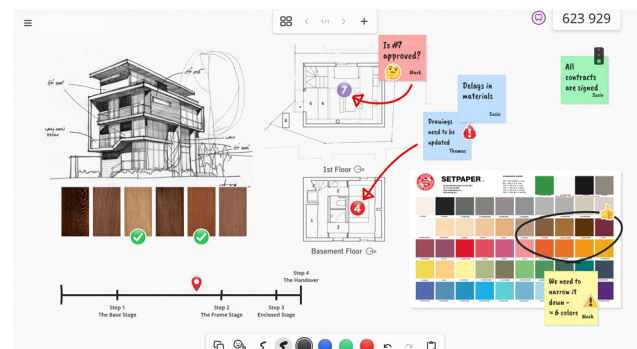
- No apps or dongles required
- Display your own content between sessions
- Cast your favorite media and other Chromecast enabled apps



FlatFrog Board for Rooms

FlatFrog Board for Rooms is a collaborative whiteboard solution that turns ordinary meetings into productive sessions in the office.

- Designed to be as intuitive as your dry-erase whiteboard
- Add sticky notes and choose from different templates
- Collaborate from any device



NaviSet

All-in-one remote support for desktop monitors, large format displays, interactive displays, and projectors

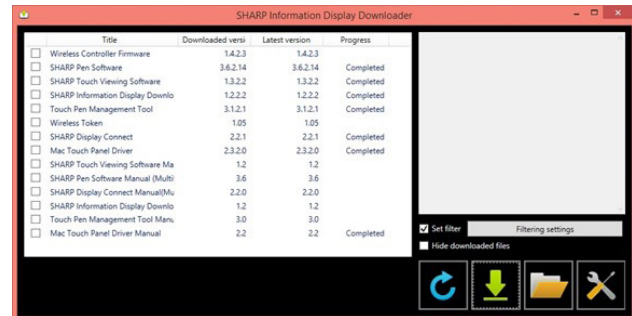
- Reduces administration efforts and costs
- Easier management of large visual estates
- Enables detailed analysis of device usage



Sharp Information Display Downloader

Stay up to date with the latest applications and firmware available for your Sharp displays by downloading the Sharp Information Display Downloader.

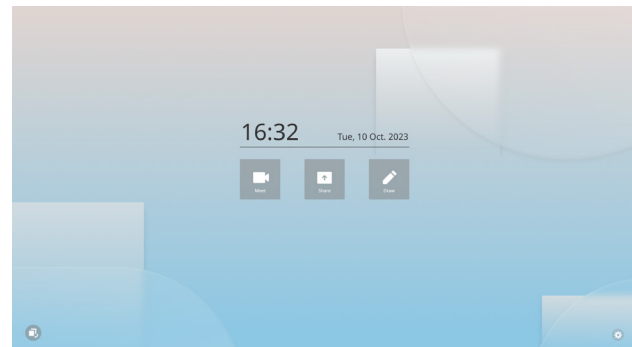
- Receive automatic update information for your Sharp displays
- Know precisely which applications are available for your Sharp displays (e.g, Sharp Pen software)
- Easy download from Sharp server of latest software and firmware



Sharp Meeting Launcher

Sharp Meeting Launcher provides quick and easy access to your favorite Windows apps while offering a secure and locked environment.

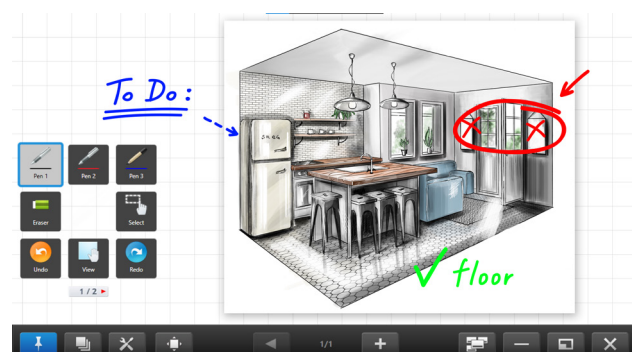
- Full screen locked kiosk mode
- Dedicated PC security settings
- Room reset features



Sharp Pen Software

Our pioneering Sharp Pen Software allows several people to write on the same display at the same time.

- Floating tool bar offering smartly arranged icons with easy access to pen settings and functions
- Overlay mode allows the user to write on-screen and annotate directly onto photos, videos, PDFs and Microsoft® files
- Turns your hand written notes into digital script



Choose from a wide range of available options

A wide range of options and services enriches the capability to transform your Sharp Collaboration Display into a tailor-made solution serving your unique needs.

Slot-in Computing

Simplifying device installation, usage, maintenance and upgrade, the integrated slot-in options feature a customisable selection of computing power.

Intel® OPS slot-in PCs for Sharp LC & LB series:

Upgrade the computing power of your Sharp LC & LB series by adding a Windows based OPS slot-in PC.

- OPS Slot-in PC Enterprise Pro: Intel® Core™ i5, 8GB RAM, 128GB SSD, WiFi, Windows 11 Pro
- OPS Slot-in PC Enterprise Ultra: Intel® Core™ i7, 16GB RAM, 256GB SSD, WiFi, Windows 11 Pro



Intel® SDM slot-in PCs for Sharp LA series:

Enhance the computing power of your Sharp LA series displays by adding a Windows based SDM slot-in PC.

- SDM-L Slot-in PC Enterprise: Intel® Core™ i5, 16GB RAM, 256GB SSD, WiFi, TPM, Windows 11 Pro
- SDM Slot-in PC Collaboration: Intel® Core™ i5, 16GB RAM, 256GB SSD, WiFi, TPM, Windows 11 Pro; Preinstalled applications: Sharp Meeting Launcher, FlatFrog Board for Room collaborative whiteboard software (1-year license), AirServer for wireless screen sharing.



Cables



USB-C cable to support BYOM in hybrid meetings and lessons.

One single USB-C cable connects your notebook with your Sharp Collaboration Display to share content or start a video meeting.

USB-C 5M: 5 meter USB-C hybrid optical cable, DP1.4 DP Alt Mode 4 lanes USB2.0

Mounting

Choose from wall-mounted or mobile trolley-mounted options to suit your usage scenario.



L20PNWALL90EU

Universal X-Large flat wall mount for 65" LC & LB series and LA series.



SF680P

Universal XX-Large flat wall mount for 75", 86" LC & LB series.



L20PNSR780MEU

Mobile stand for 65" and 75" LC & LB series and LA series.



PD02MHA

Entry automatic height-adjustable trolley. (Note: PD02MHA-CB86 for 86" LC & LB series).



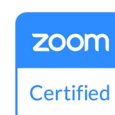
PD03MHA

High-end automatic trolley height-adjustable. (Note: PD03MHA-CB86 for 86" LC & LB series).

All-in-One Videobar

Universal all-in-one unified communication soundbar for hybrid meeting rooms.

Sharp's AV Soundbar PN-ZCMS1 enabling quick and easy-to-use unified communication, enhancing almost any office, meeting room and classroom. Easy installation on top of your Sharp Collaboration Display using the supplied camera bracket.



Service PLUS - a commitment to quality

Sharp/NEC has built a world-renowned reputation developing Visual Solutions that offer the ultimate in quality, performance and longevity.

The Service Plus offering

A unique service with an unrivalled service partner network and support infrastructure. Guaranteed performance for the entire lifecycle of our products.

- Flexible Warranty Extension Programs for all product categories
- 24/7 for selected displays and projectors
- De-Re-install service for displays and projectors
- Optional additional services for dedicated Sharp/NEC displays and projectors with Support+



Sharp NEC Display Solutions Europe GmbH

Landshuter Allee 12-14, 80637 Munich, Germany

Tel.: +49 (0)89/99 699-0

E-mail: infomail.sndse@sharp.eu